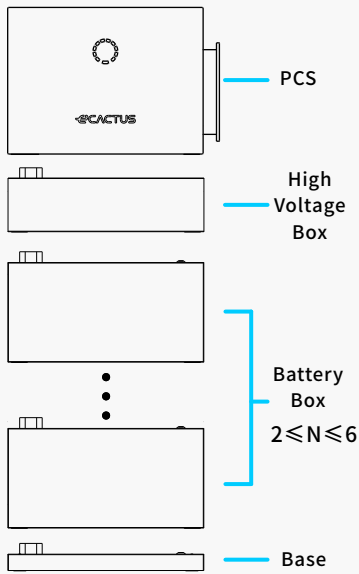
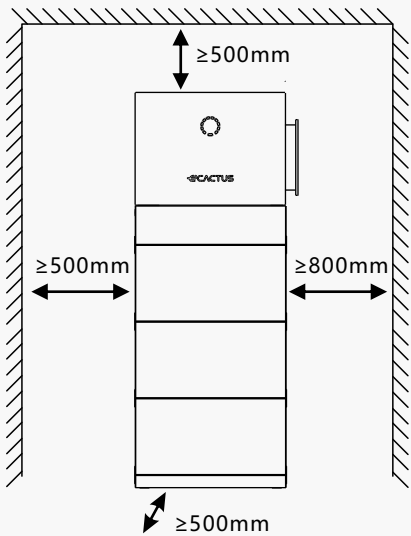


Quick Installation Guide

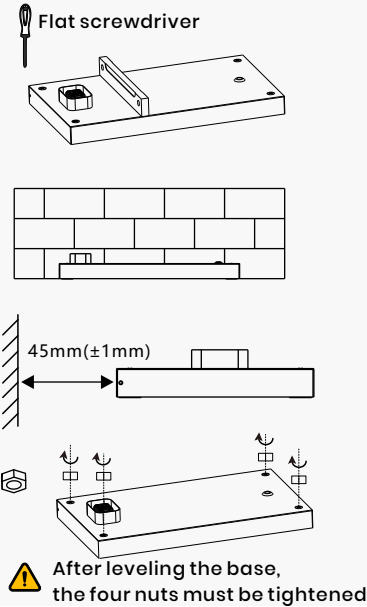
A Module introduction



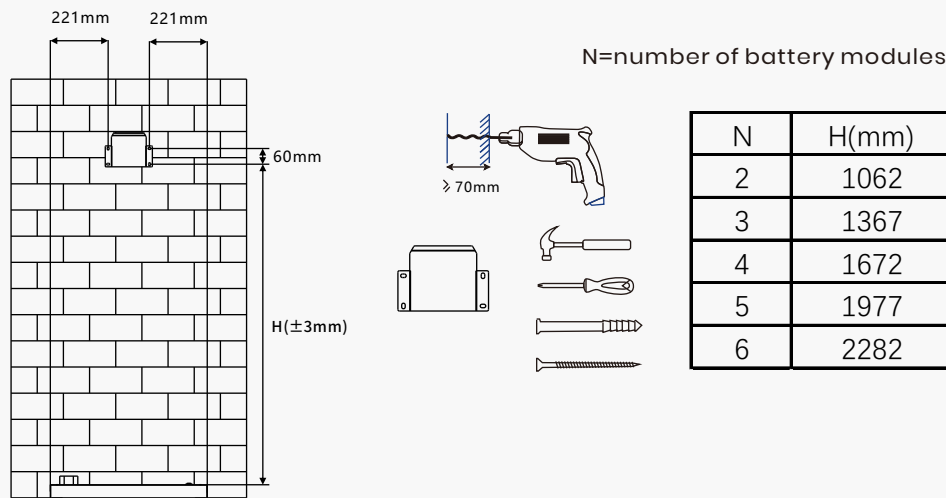
B Installation Space Requirements



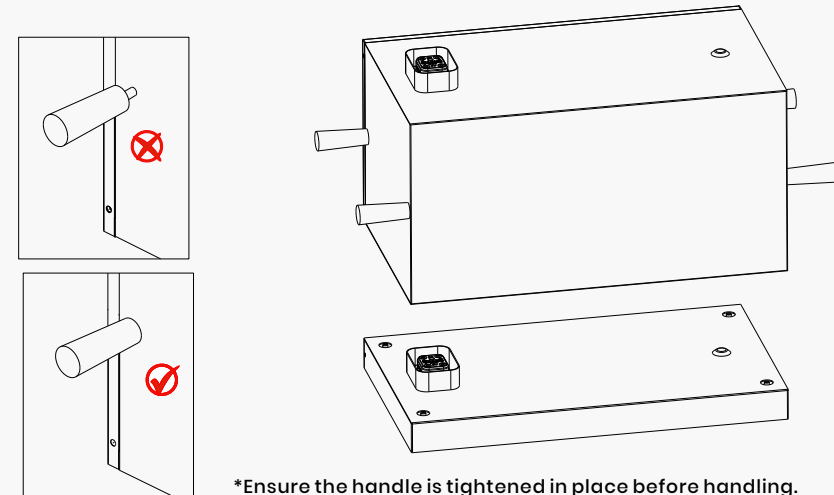
STEP 1



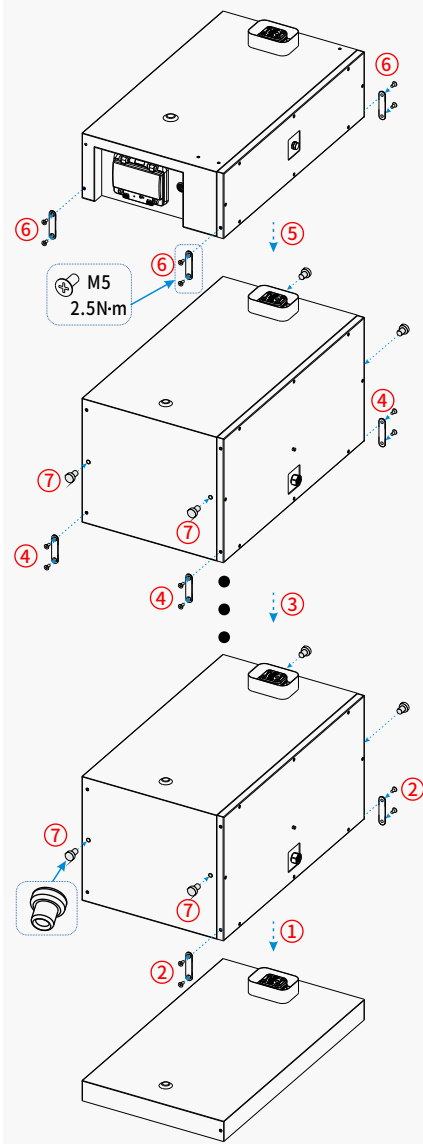
STEP 2



STEP 3

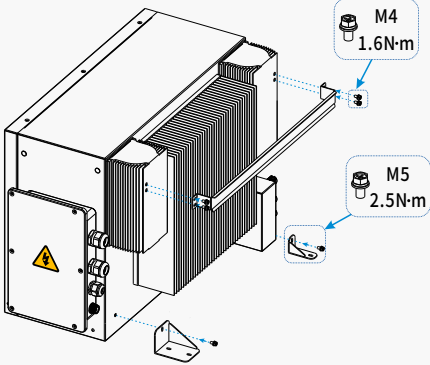


STEP 4

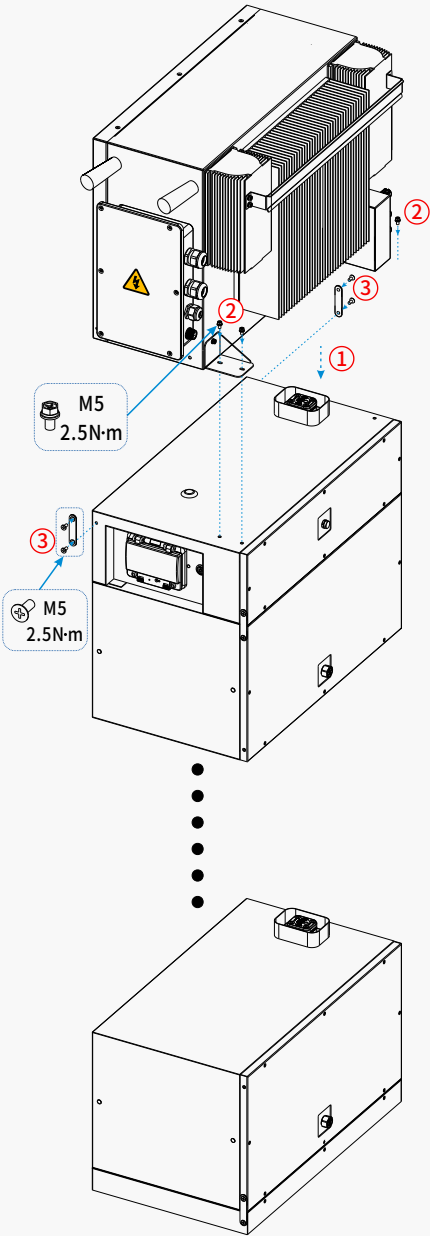


Quick Installation Guide

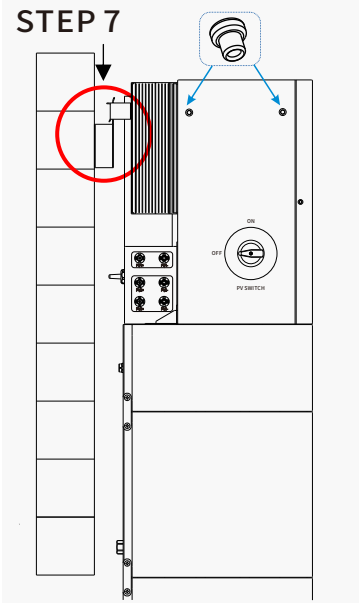
STEP 5



STEP 6



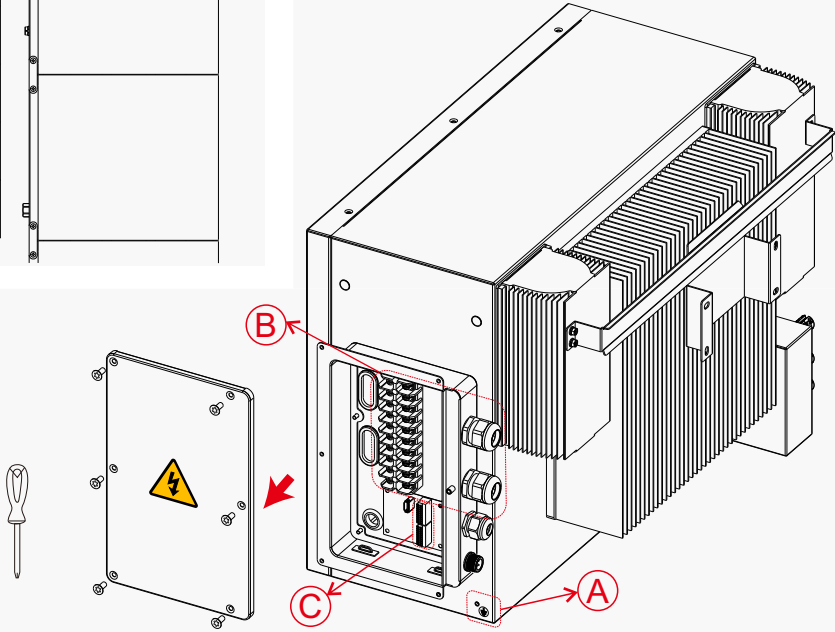
STEP 7



STEP 8



Make sure all BESS switches and breakers turned OFF!
The product operates at high voltage.
All work on the product must be carried out by qualified persons only.



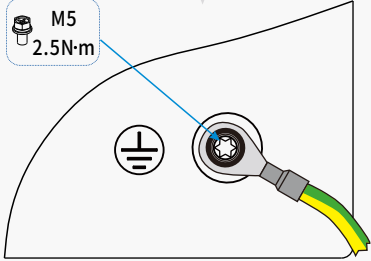
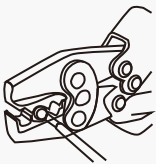
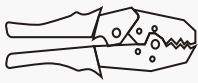
STEP 9

A

4-6mm² yellow-green cable

7mm

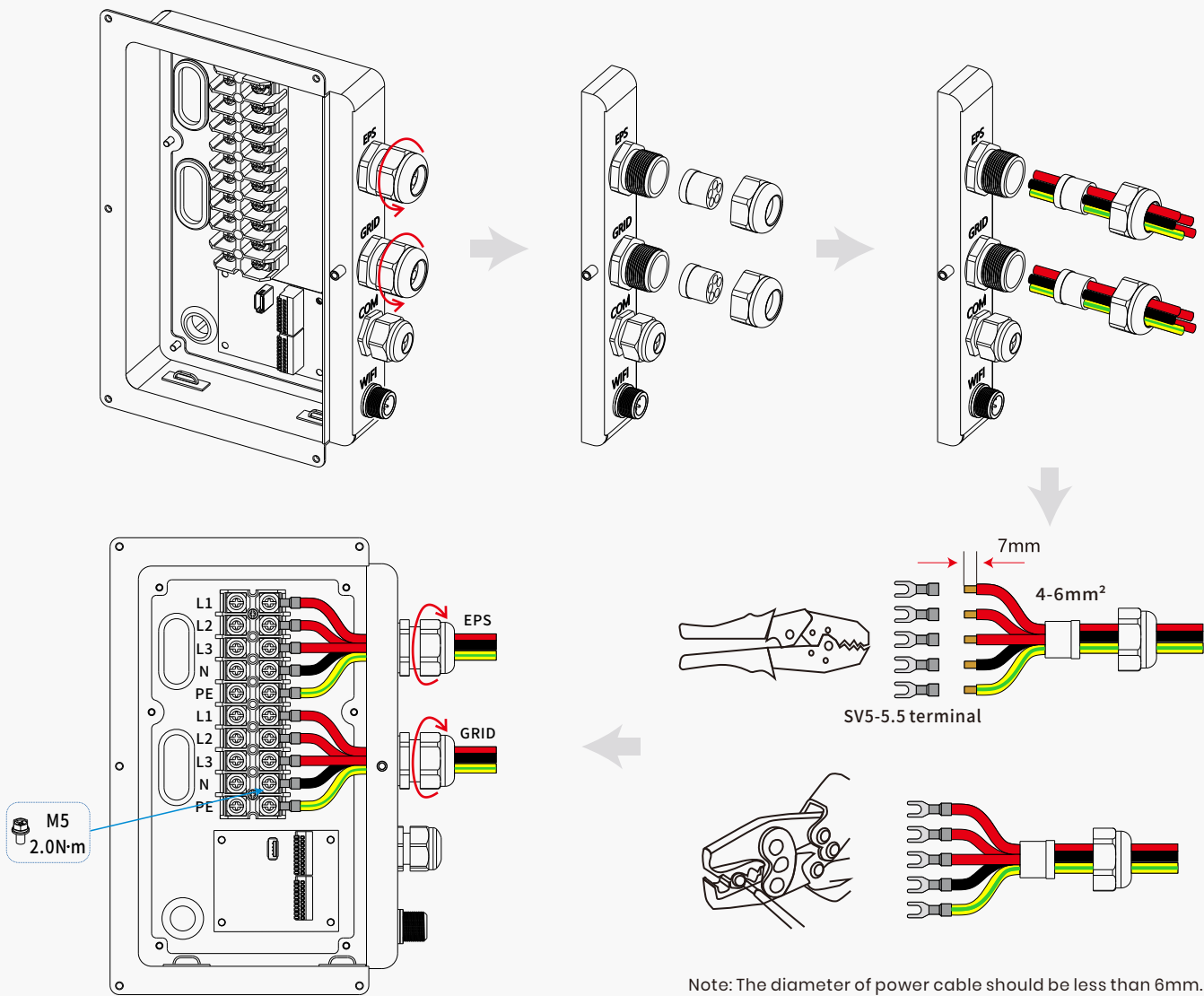
OT5-5 terminal



Quick Installation Guide

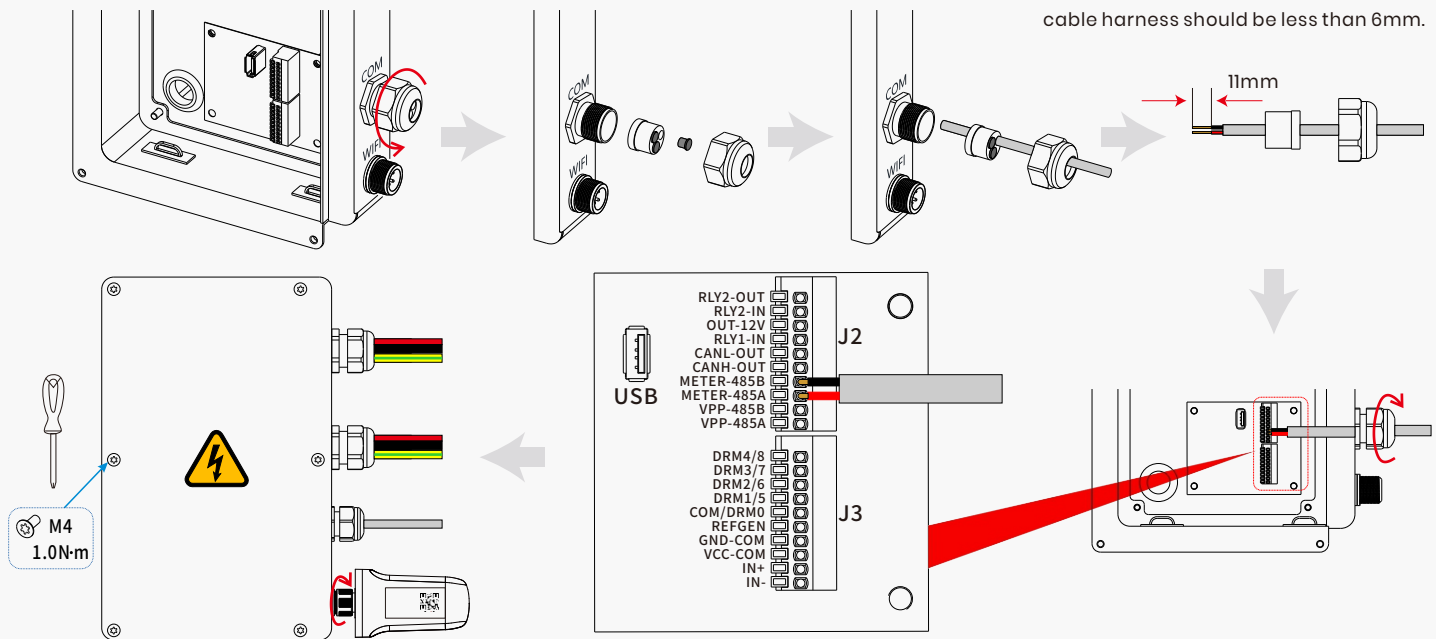
STEP 10

B



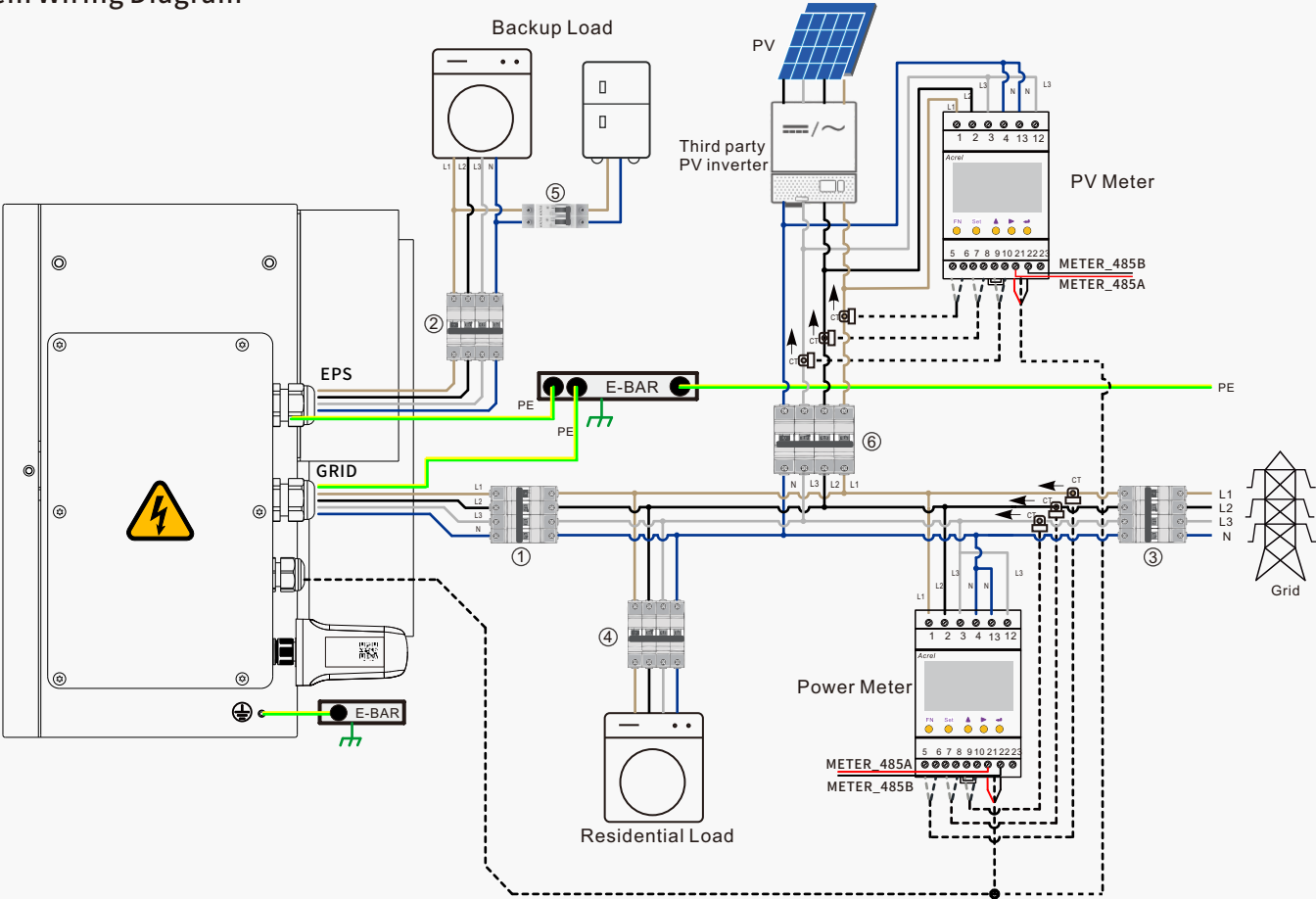
STEP 11

©



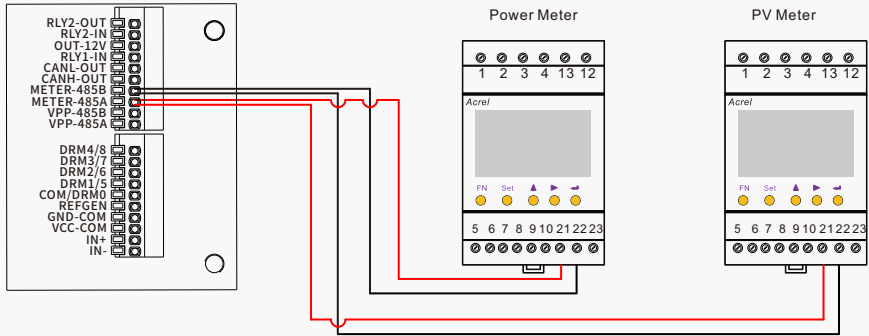
Quick Installation Guide

STEP 12 System Wiring Diagram



Model	①	② ⑤	③ ④	⑥
WH-TIA502	32A/230V AC breaker	16A/230V AC breaker	According to residential load (generally already installed in the grid distribution box)	According to the electrical parameters of the PV inverter (generally already installed during the PV inverter installation)
WH-TIA602	32A/230V AC breaker	16A/230V AC breaker		
WH-TIA802	32A/230V AC breaker	16A/230V AC breaker		
WH-TIA103	32A/230V AC breaker	32A/230V AC breaker		
WH-TIA123	32A/230V AC breaker	32A/230V AC breaker		
WH-TIA133	32A/230V AC breaker	32A/230V AC breaker		

Three phase meter wiring diagram



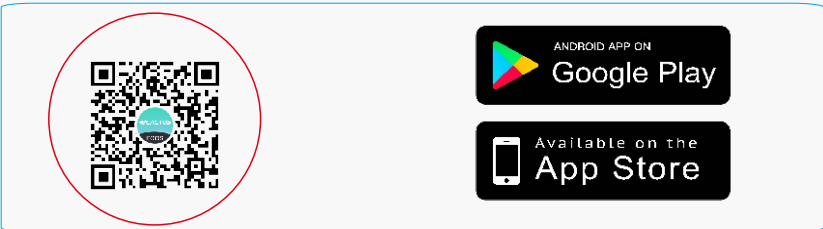
Quick Installation Guide

STEP 13 App Pairing

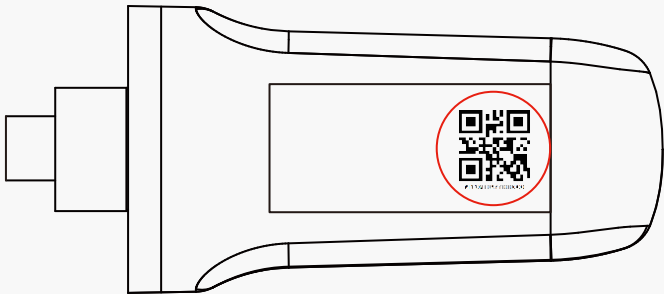
- 1. A router connected to the Internet is required to connect to the ECOS application center.
- 2. Android or iOS smartphone.

Notice

Scan the QR code below to download the Android or iOS version of the ECOS app.



The product ID QR code required for connection can be found on the included Wi-Fi dongle installed on the right side of the device. included Wi-Fi dongle installed on the right side of the device.



For network configuration instruction, please scan the QR code.

